

Lutske Lindeman

l.lindeman@rotterdam.nl

0031 6 20879710

Mobility Transition in Rotterdam

AVERE
17 February 2021



14-10-2019



**SMART ACCESSIBILITY FOR A HEALTHY,
ECONOMICALLY STRONG AND ATTRACTIVE
ROTTERDAM**

Rotterdam Urban Traffic Plan 2017 - 2030+

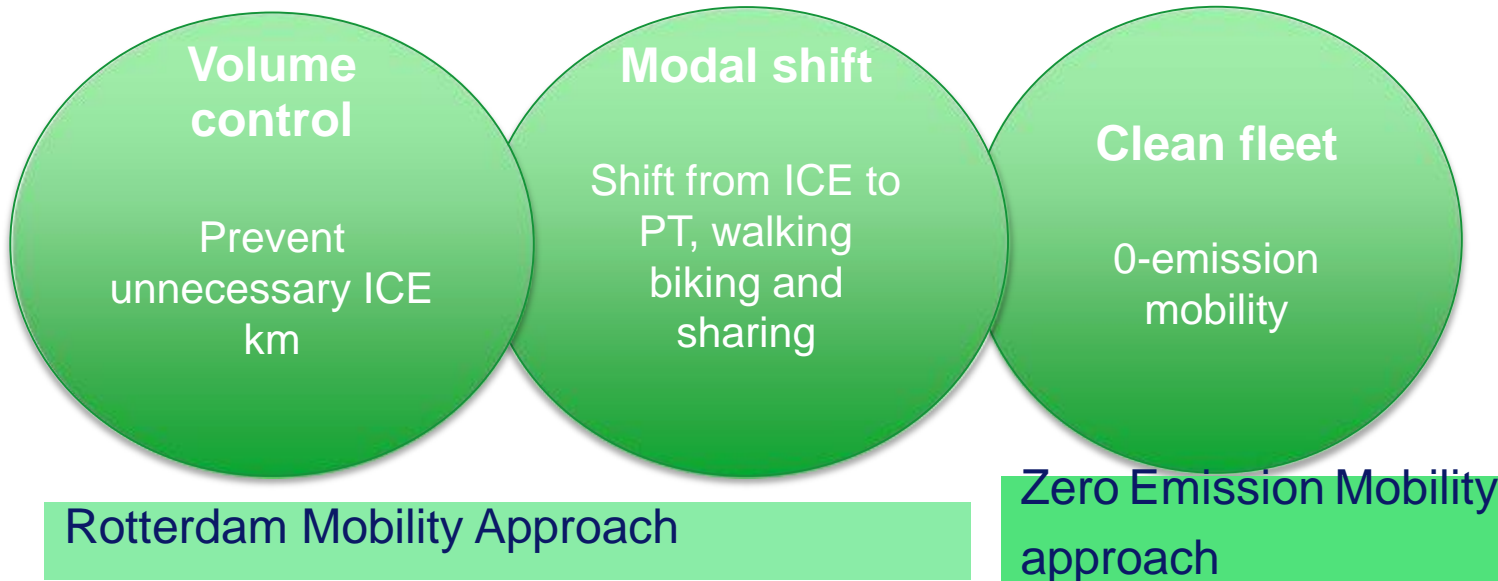


Policy on climate & mobility

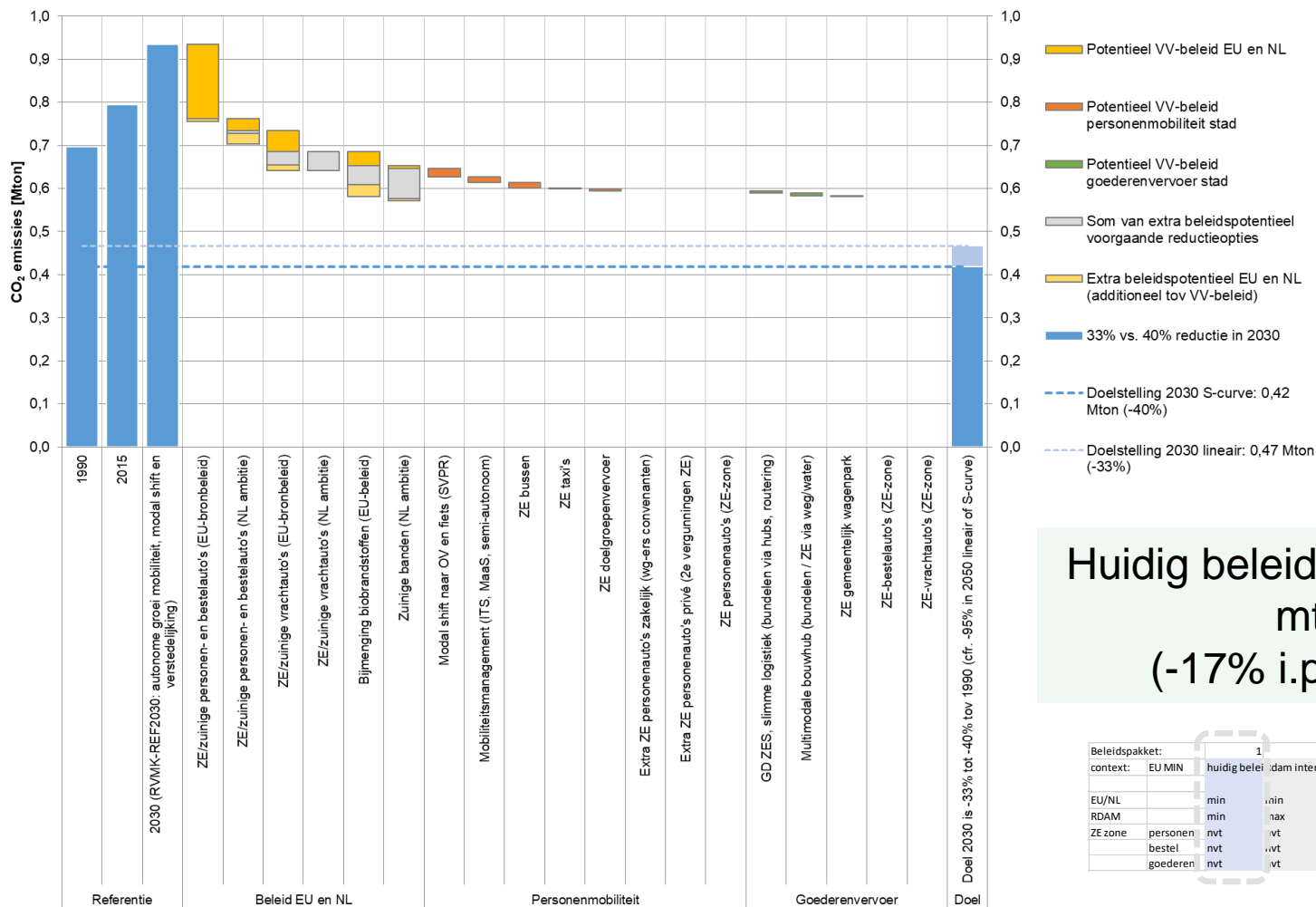
Target national and local: - 49% CO2 emissie 1990-2030

One third of CO2-emission and a quarter of the airpolution in urban areas is caused by mobility

Rotterdam Urban Traffic plan



Rotterdam 2030 - CO₂ Mobiliteit Research by TNO



Huidig beleid komt op 0,58 mton (-17% i.p.v. -40%)

Beleidspakket:	1	2	3	4	5	6
context: EU MIN	huidig beleid	dam intensivering	ZE zones			MAX STAD
EU/NL	min	min	min	min	min	min
RDAM	min	max	min	min	min	max
ZE zone	personen	nvt	vt	klein	klein	klein
	bestel	nvt	vt	klein	midden	groot
	goederen	nvt	vt	klein	groot	groot

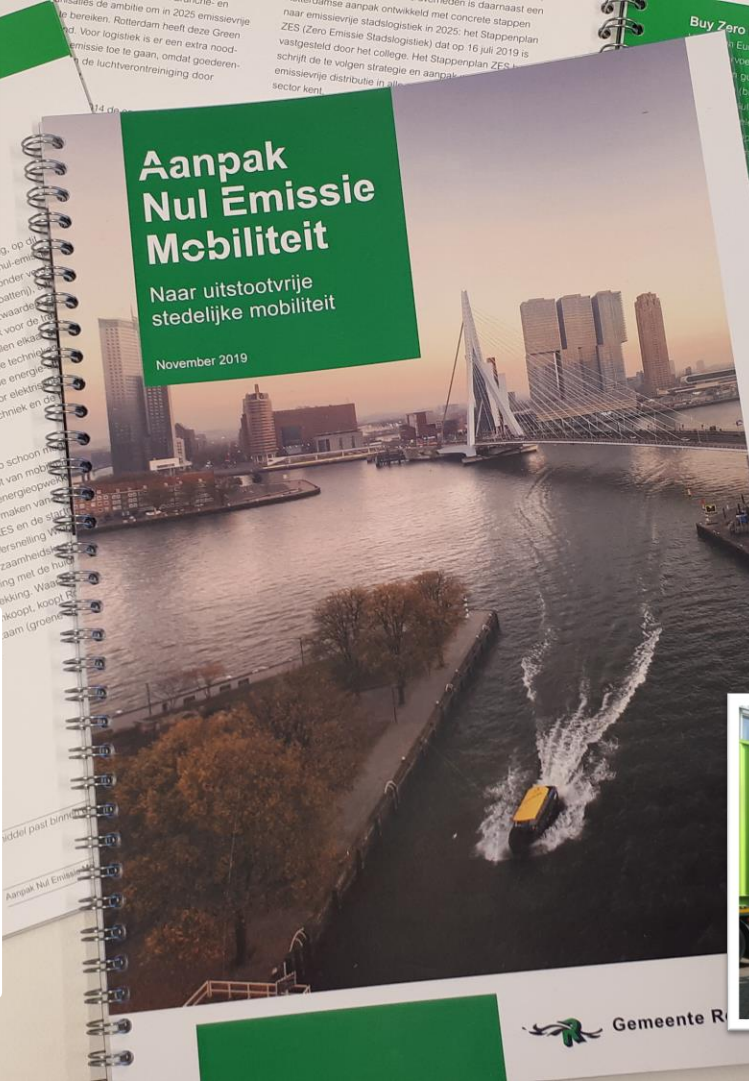
Zero emission Mobility Approach for urban mobility



Aanpak Nul Emissie Mobiliteit

Naar uitstootvrije stedelijke mobiliteit

November 2019



Buy Zero Emission

Europees probeert te stimuleren... gummiescriptie... by transport... is meer... leveringen in... m.b.t. emissie... gemeentelijke

Gemeente

werker in R... Rotterdam... om afva... reizen... houdsw... erk te ve... in de k... geme... van di... aan

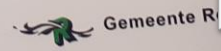
...naren we pilots uit... standaard op de markt' ver...

...ngeling Vervoer & Mateneel... (easle) samenwerkt met... ringsorganisaties en... de krachten. Samen... een belangrijk thema... creëren van door... tellen.

...agenpark stellen we... is een duurzaam... genpark, waarbij... 2030 emissievrij is.

...nderverdeling

De gemeente heeft een volledig emissieloze heftruck. Deze heeft een hefcapaciteit van 5000 kg, is volledig elektrisch en kan zo nodig omgebouwd worden naar op diesel reed vervangen. De komende jaren worden meer werktuigen van de gemeente vervangen door emissievrije alternatieven.



Rotterdam goes electric; 4 pilars



Transport of People



Municipal Fleet

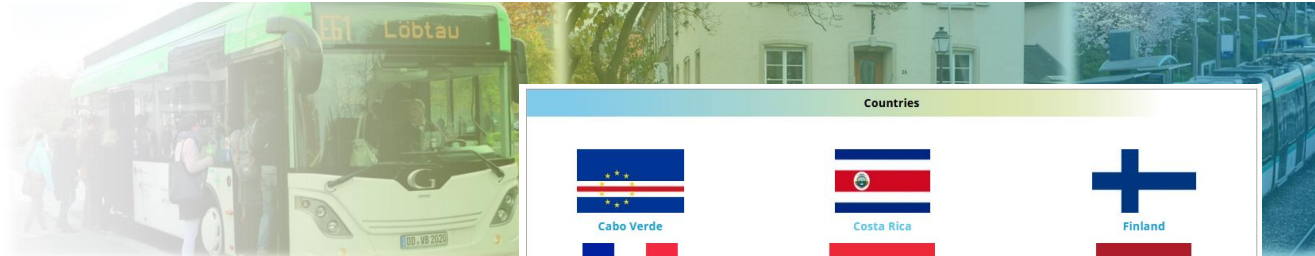
Transport of goods



Charginginfrastructure



International



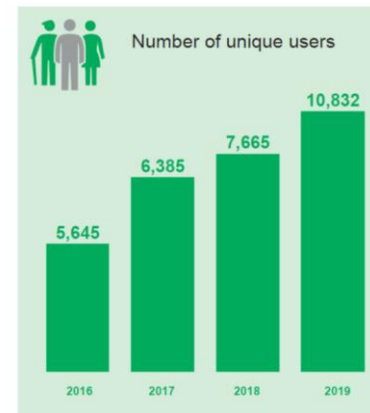
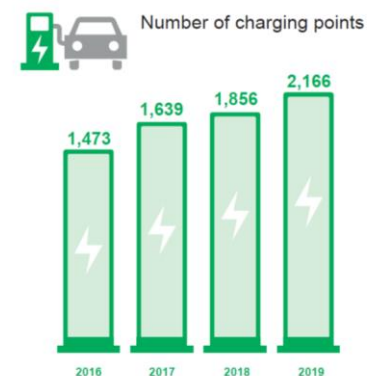
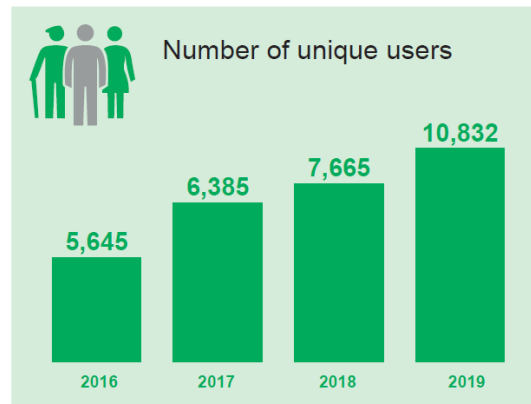
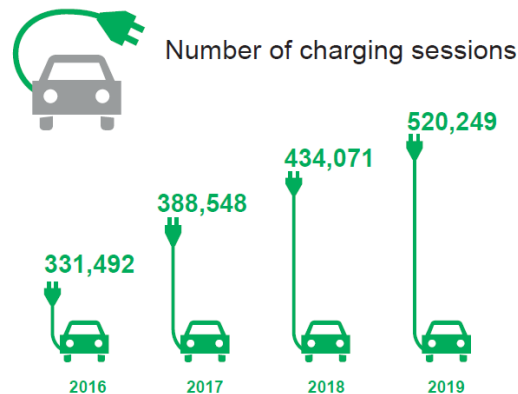
Countries		
 Cabo Verde	 Costa Rica	 Finland
 France	 Luxembourg	 Netherlands
 Portugal		
Cities and Regions		
 California	 Gaia	 Lisbon
 Maputo	 Matosinhos	 Porto
 Quelimane	 Rotterdam	 Scotland
Companies		
 ALSTOM	 Brisa	 CEIIA
 Deutsche Post DHL Group	 edp	 ITAIPU BINACIONAL
 MICHELIN	 PTV GROUP	 TEVVA



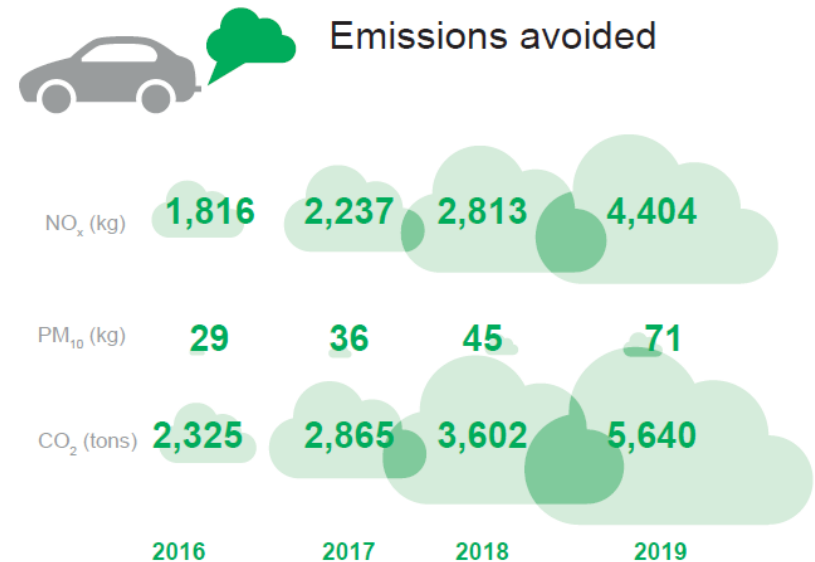
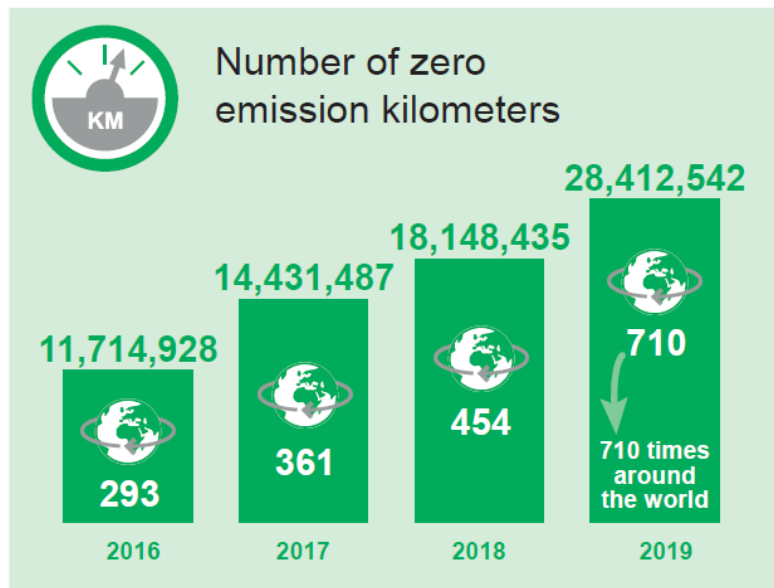
Charging infrastructure Rotterdam

- > 3000 chargepoint, 2500 public
 - Innovative tenders; market invests in charging network in Rotterdam (buca)
 - Demand Driven
 - Research and pilots for charging for city logistics
 - Quick chargers on gasstations and in tenders for all modes
 - Several pilots (5 charge squares, Streetplug, quickcharging, inductive)
 - With 4 biggest cities we form a region on charging, we share knowledge
- Work on more efficiency

“what we do suits the demand and is done well!”



Environmental impact EV charging Rotterdam



Regional approach charging infrastructure on demand



It is the responsibility of a local government to organise the public space and facilitate the demand for charging infrastructure of our citizens. 30 cities work together on charging infrastructure in 1 big tender. We place charging infrastructure data and demand driven. Electric mobility grows with rappid speed!

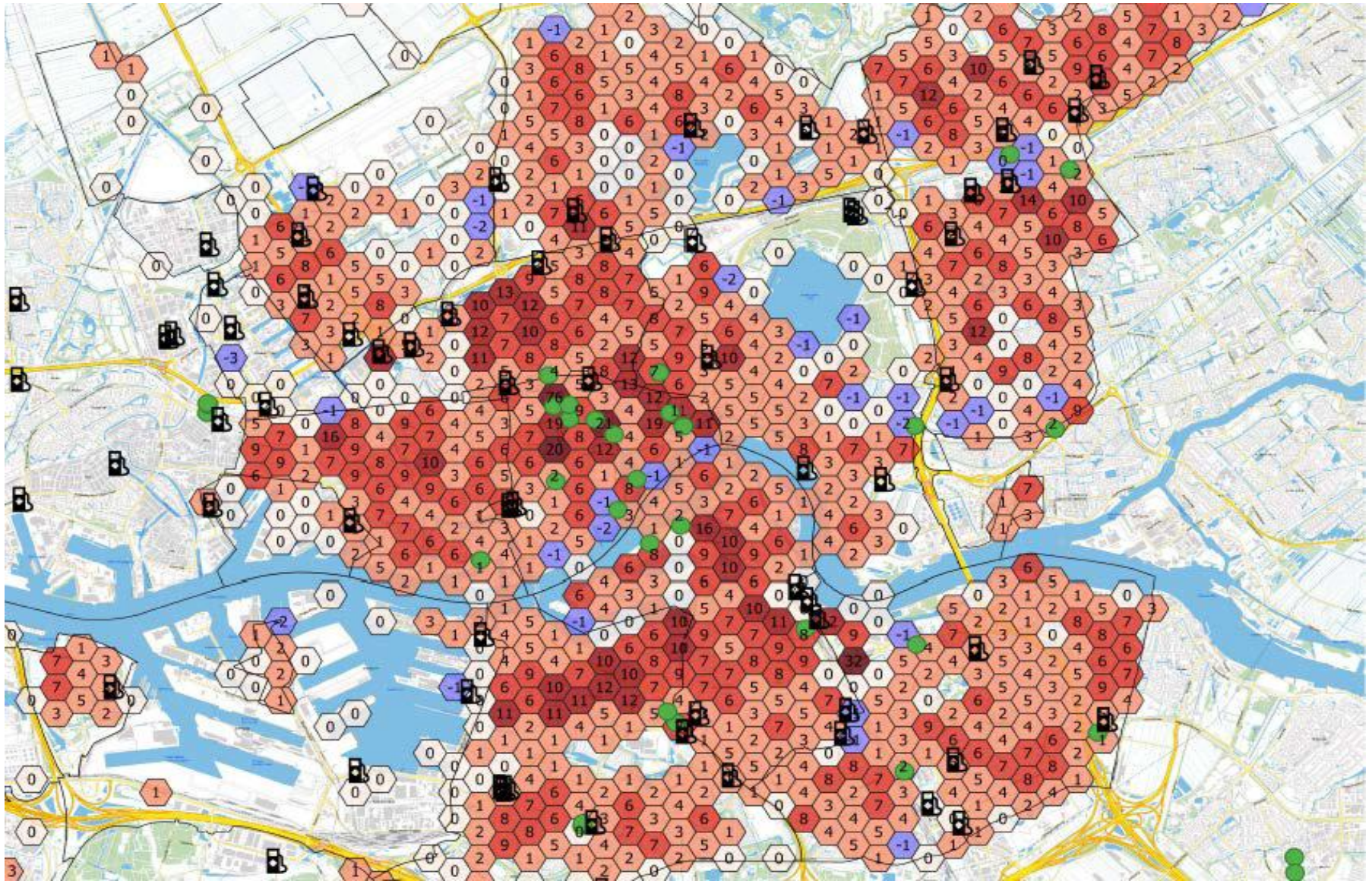
1000 demands in february 2019

2000 demands in september 2019

3000 demands in januari 2020

4000 demands in juli 2020

Development demand driven from request to data driven



National ambition Zero Emission Vehicles

- Zero Emission sales of private cars 100% in 2030
- Zero Emission transport of people in 2025
- Zero Emission city logistics in 2025
- Zero Emission busses in 2025



- **Tax system fits 0-emission mobility**
- **1,8 million charge poles needed for 2 million FEV:**
National Approach Charging Infrastructure:
Public charging, at home and at the company, Quickcharge, In coordination with the energy transition, For all modalities! 6 Regions within NL
- **Subsidy since July 2020 (4000 for newly sold cars, 2000 euro for 2 hand)**
- **Increase findability of charging infrastructure**
- **Stakeholders cooperate in National knowledge platform on charging infrastructure, National approach on charging and national Formula E-Team**





Lutske Lindeman
L.Lindeman@rotterdam.nl
0031 6 20879710